

DiscMaster 2TD-500

Deburring and edge rounding machine for laser cut and punched sheet metal

Deburring and edge rounding in one pass

The DiscMaster 2TD-500 is equipped with one large deburring discs and one large edge rounding discs. The discs oscillate continuously over the workpiece during the through feed.

This unique technology has several advantages:

- Deburring and edge rounding in one pass
- All inside and outside edges are processed from all angles and directions
- working width 500mm and for small parts from 20 x 20mm
- Uniform wearing of abrasive tools irrespective of the size of the workpiece or where it is placed on the conveyor belt. The machine can therefore process wider parts without having to calibrate any tools.
- When processing mixed materials (i.e. steel/ stainless- steel) the tools must be changed. The two discs on the CrossMaster 2Td can be changed within minutes.
- A large variety of disc tools are available on the market. This keeps tooling costs down and increases the versatility of the machine.
- Low investment, low tooling costs and low operating costs ensure a speedy return on investment.



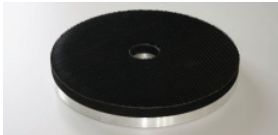
LOEWER

DiscMaster 2TD-500

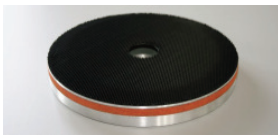
How the machine works:

The workpiece passes through the machine on a conveyor belt. A rotating deburring disc and a rotating edge rounding disc, oscillate continuously over the workpiece during throughfeed. All inside and outside edges are processed uniformly from all angles and directions.

The workpieces are placed on a high-friction feed belt. Spring mounted hold down rollers push the workpiece under the discs. The disc tools also push the workpiece against the feed belt during operation so it is possible to process even very small workpieces starting from **20 x 20mm**.



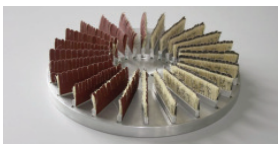
SoftDisc: Ideal for deburring laser-cut aluminium or steel parts. The softness of the disc creates a lot of pressure on the edges and very little pressure on the surface of the part. It generates little heat and is very forgiving. It also works well for small parts.



CombiDisc: The CombiDisc removes high burrs and spatter on stainless steel. Abrasive discs are available in ceramic or zirconium in different grit sizes.



MediumDisc B: The MediumDisc B is the first choice for edge rounding on all materials, is a very economic tool with a high life time and is available in different compressions and grit sizes.



SmartFlexDisc: Equipped with brush-supported flexible finger abrasives. It creates very little pressure on the surface of the workpiece and is ideal for edge rounding of foiled or zinc-plated parts and for 3D-parts with stamped or drawn forms.



OxideDisc: With angled wire brushes to remove oxide on the side edges of laser-cut steel parts.

Technical Data DiscMaster 2TD-500:

- Max. working width 500mm, workpiece thickness 1 - 100mm
- one disc on infeed side, one disc on outfeed side, each 2,2kw, 750 rpm, diameter 250mm, separate height adjustment for compensation of tool wearing
- Oscillation by gear motor 0,75kW, infinitely variable oscillation speed
- High friction feed belt with infinitely variable feed speed 1-6m/min
- motorized height adjustment of workpiece thickness using push buttons up/down incl. digital display
- separate switch for tool change, machine open automatically to max. height of work piece
- 4 spring loaded hold down rollers with pneumatically controlled lifting device
- Adjustment of workpiece thickness using hand wheel with mechanical digital display
- Brush strips under feed belt for wiping off dust on the feed belt
- Dust extraction connection 1 x 150mm diameter
- 400V, 50Hz, 3P, compressed air connection
- Length 1500mm, width 1400mm 900kg

Optional Extras:

- Infinitely variable rpm of discs 400-1600RPM using two frequency inverters (for infeed disc and outfeed disc separately)
- Integrated rotating cleaning brush for feed belt

Jakob LOEWER
Inh. von Schumann GmbH & Co. KG
Am Wasser 4
D-34576 Homberg (Germany)

LOEWER
Innovative Schleiftechnik

Tel. +49 (0) 56 81 99 04 0
Fax. +49 (0) 56 81 99 04 99
e-mail: info@loewer-maschinen.de
www.loewer-maschinen.de